

# WHY ADMINISTRATORS CHOSE UL LAFAYETTE

61%



Career Advancement

Location

42%



University Reputation

34%



Academic Reputation

31%



Based on employee respondents to the  
UL Lafayette Campus Climate Survey

# FACULTY RESPONDENTS BY RANK



**63%**

Full-time  
Faculty Members

**20%**

Professor Rank

**23%**

Associate  
Professor Rank

**21%**

Assistant  
Professor Rank

**17%**

Tenured Faculty

**9%**

Tenure-track  
Faculty

Based on employee respondents to the  
UL Lafayette Campus Climate Survey

# HOW FACULTY LEARNED ABOUT THEIR JOB

**33%**

Through a  
colleague

**31%**

Job board

**18%**

Through  
a Friend

Based on employee respondents to the  
UL Lafayette Campus Climate Survey

# AREAS THAT FACULTY WORK IN

**28%**



**Liberal Arts**

**19%**

**The Sciences**



**13%**

**Education & Human Development**

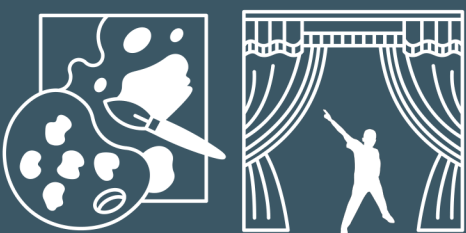


**13%**

**Nursing & Health Sciences**



**11%**



**The Arts**

Based on employee respondents to the UL Lafayette Campus Climate Survey

# WHY FACULTY CHOSE UL LAFAYETTE

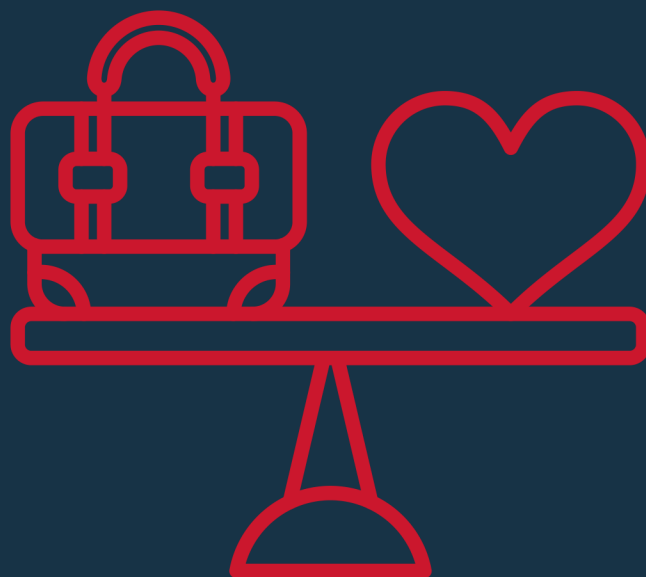


**Close to Home**



**33.5%**

**Research Opportunities**



**31.76%**

**Work-Life Balance**

Based on employee respondents to the  
UL Lafayette Campus Climate Survey

# EMPLOYEE TYPES AT UL LAFAYETTE



Based on employee respondents to the  
UL Lafayette Campus Climate Survey

# HOW STAFF LEARNED ABOUT THEIR JOB



**38%**  
Job boards

**22%**  
Through a  
Colleague



**21%**  
Through  
a Friend

# HOW LONG FACULTY HAVE BEEN WITH UL LAFAYETTE



**28%**  
6-10 years

**25%**  
1-5 years



**16%**  
21 Years  
or More

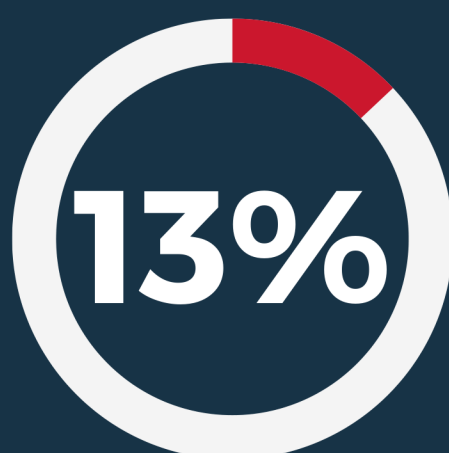
Based on employee respondents to the  
UL Lafayette Campus Climate Survey



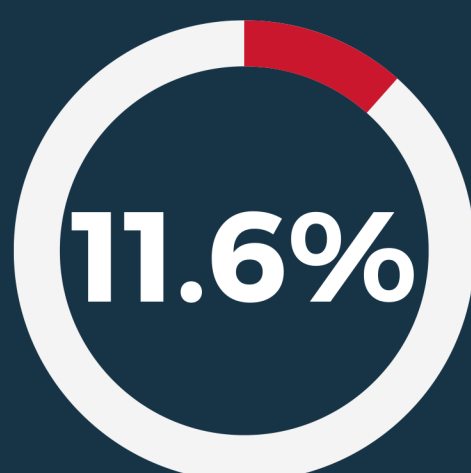
# AREAS THAT STAFF WORK IN



**Academic Affairs**



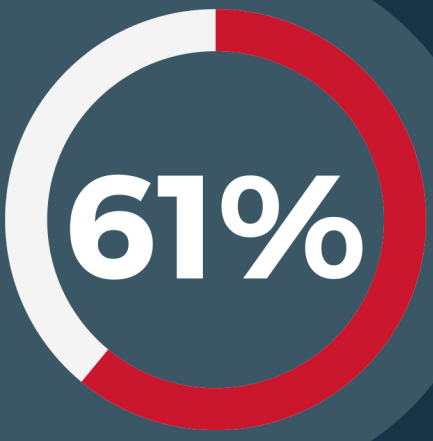
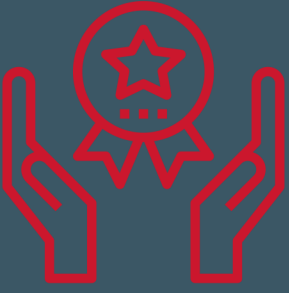
**Administration  
and Finance**



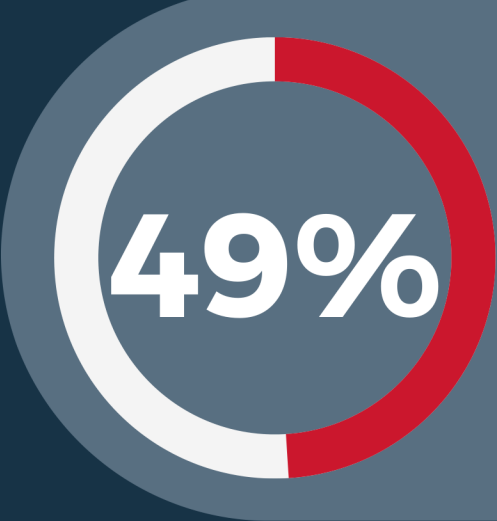
**Research,  
Innovation, &  
Economic  
Development**

# WHY STAFF CHOSE UL LAFAYETTE

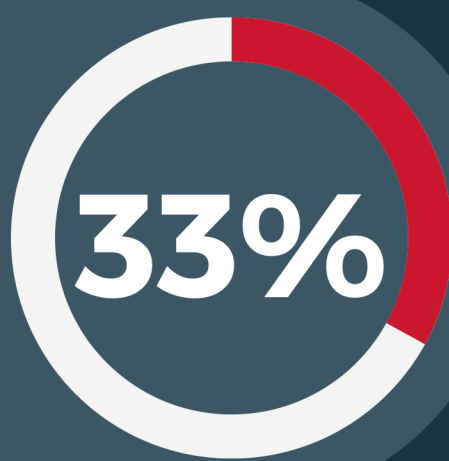
## Employee Benefits



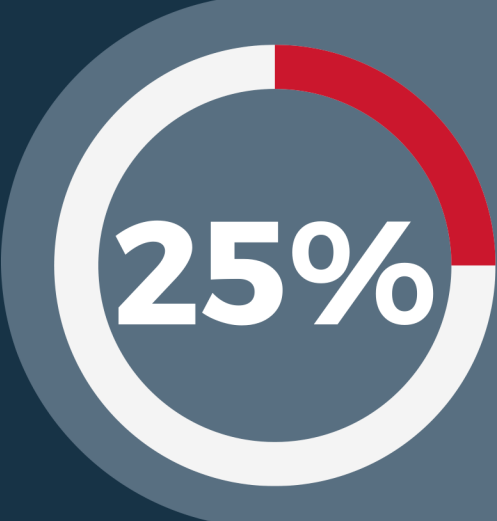
## Close to Home



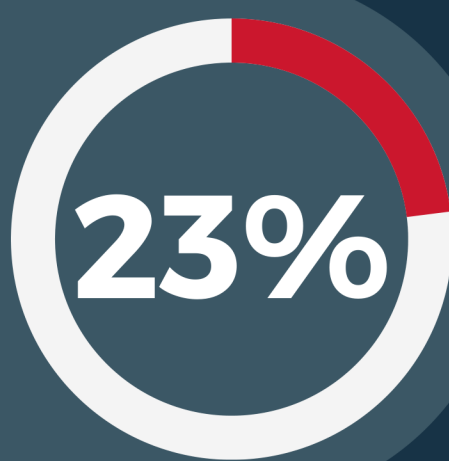
## Work-Life Balance



## Surrounding Community



## University Reputation



Based on employee respondents to the UL Lafayette Campus Climate Survey

# HOW LONG STAFF HAVE BEEN WITH UL LAFAYETTE

1-5 years

**26%**

**24%**

6-10 years

Less than  
one year

**16%**

**13%**

11-15 years

21 years  
or More

**12%**

Based on employee respondents to the  
UL Lafayette Campus Climate Survey

# STAFF WITH DISABILITIES



**10%**

Identified as having a Disability



**49%**

Medical/Chronic Health Condition



**42%**

Identified as having a Psychological Condition



**36%**

Mobility/Orthopedic Accommodation



**21%**

Requested Accommodation



**15%**

Deaf/Hard-of-Hearing  
ADHD

(Attention Deficit Hyperactivity Disorder)